

## Modes of making financial donations

To donate to the Shree Shivkrupanand Swami Foundation Canada using a Canadian bank account, please preferably use Interac e-transfer with this e-mail:

[canada@shivkrupanandji.net](mailto:canada@shivkrupanandji.net)

---

To transfer money directly into the Foundation's bank please use the following information:

Shree Shivkrupanand Swami Foundation  
Canada  
Royal Bank of Canada  
A/C number: 1008325  
Transit number: 03221  
Institution Code: 003  
Swift number: ROYCCAT2  
Bank Address: 226 Water Street, St. John's,  
NL, CANADA, A1C 1A9.

---

To donate using PayPal visit:

[www.samarpanmeditation.ca/donate](http://www.samarpanmeditation.ca/donate)  
and click on the donate button.

---

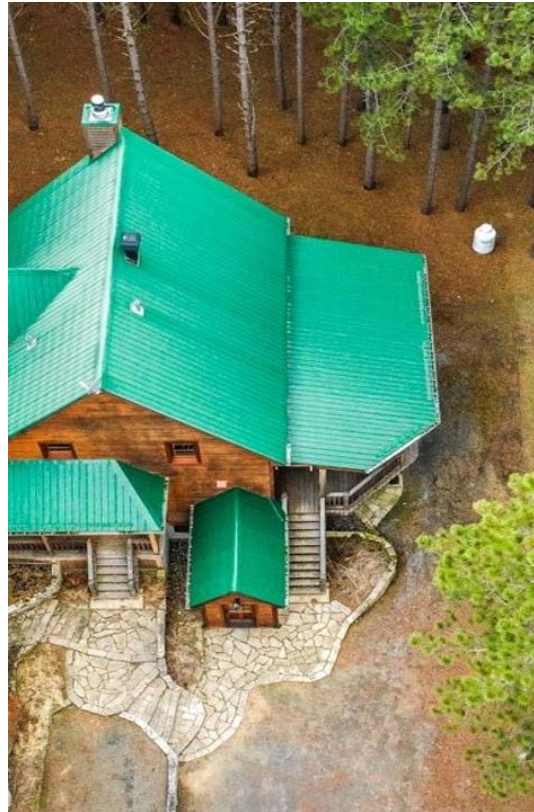
To donate by cheque, please make it payable to:

Shree Shivkrupanand Swami Foundation  
Canada

Mailing address

Shree Shivkrupanand Swami Foundation  
Canada

c/o Veeresh Gadag, 91 Penney Crescent,  
St. John's, NL, CANADA, A1A 5L8.



### Contact Us:

**Samarpan Meditation Canada**

[www.samarpanmeditationcanada.org](http://www.samarpanmeditationcanada.org)

Samarpan Ashram of the Americas  
888 Chemin de la Rivière du Nord  
Saint-Colomban, QC  
Canada - J5K 2E6



**SAMARPAN ASHRAM**

**A VISION FOR A  
SHREE GURU SHAKTI  
DHAM**

**A PERMANENT ABODE OF  
THE GURU ENERGIES**

## SAMARPAN MEDITATION

Samarpan Meditation is a simple spiritual path which helps one to experience the fullness of life from within. It provides a direct way to awaken our inner wisdom or the 'Knowledge within' through the medium of a Living Satguru (Spiritual Master). This process of spiritual awakening of disciples has been in practice for over 800 years among the Ascetics and Sages in the Himalayas. H. H. Shree Shivkrupanand Swami brought this down to society in 1994 for the benefit of the common people in the current times. Samarpan Meditation is suitable for all ages and spans beyond the boundaries of religion, language, culture and nationality and is offered to all seekers free of cost all over the world. The meditation connects us with Nature and thereby helps us to acquire good physical and mental health. It also promotes success in various aspects of our lives.

## DEEP MEDITATION PRACTICUM

H. H. Shivkrupanand Swami commenced His 'Annual Deep Meditation Practicum' in the year 2007 at the Samarpan Ashram (Spiritual Retreat) in the town of Dandi in Gujarat, India. These practicum periods last for 45 days, during which He stays in absolute isolation at a heightened level of Spiritual Energy.

## ENERGY STATUE - MANGAL MURTI

During each of the Deep Meditation Practicums H. H. Shivkrupanand Swamiji consecrates with His own life force, an Energy Statue called a Mangal Murti. Each of these Energy Statues, 14 in total, exude Spiritual Energy. H. H. Shivkrupanand Swami consecrated and established in Canada the Energy Statue for the people of the Americas with a solemn resolution that anyone who meditates in the presence of this Mangal Murti, can experience a high spiritual state, and attain a sense of complete satisfaction.

## SAMARPAN ASHRAM

For the countries in the American continents, we are blessed to have a Samarpan Ashram in the town of Saint-Colomban, about 45 kms north of Montreal in Quebec, Canada.



The Ashram spans over 10-acres and is set in lush green nature with evergreen trees all around. The Ashram is fully functional and currently has a two-storied reception building and a two-storied three-bedroom house that can accommodate a few short term visitors.



## ABODE OF THE GURU ENERGIES

The Shree Guru Shakti Dhams are the abodes of the Guru Energies - where the Energy Statues are established. They are being constructed all over the world including, UK; Australia; South Africa; Singapore and India. The ultimate plan of H. H. Shivkrupanand Swami is to connect all the Energy Centers around world via a Divine Network. These 'Spiritual Light Houses' will meet the needs of mankind and guide millions of seekers of truth for generations to come.



*The Reception building*

## OUR VISION

Our Mangal Murti is temporarily housed on the second floor of the reception building. Currently we are fundraising to build a permanent Guru Shakti Dham to house our Energy Statue and have the capacity to seat 300 people to meditate at any given time. This place will offer a deep experience of inner peace to anyone who sits in the proximity of the Energy Statue and meditates. A sense of complete peace, contentment, and security that one experiences here can be retained with regular Samarpan Meditation practice. This Guru Shakti Dham is planned to last for more than 800 years and will become a historically important Spiritual place. We are blessed to have this opportunity in our lifetime to contribute towards its foundation.